



Indigenous Early Learning and Child Care (IELCC): A Briefing for Alberta All-Chiefs Summit

May 13, 2024



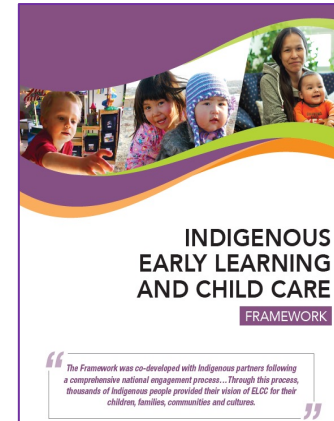
Overview

- ❖ IELCC Background:
 - ❖ A Co-developed Framework
 - ❖ Indigenous ELCC Transformation Initiative
 - ❖ Situating IELCC
 - ❖ General IELCC Decision-making
- ❖ IELCC Program
 - ❖ Snapshot of Alberta Funds 2023-24, 2024-25
 - ❖ Governance & Strategic Considerations
 - ❖ Programs and Services
 - ❖ IELCC Infrastructure Funds
 - ❖ Transformative Action Fund
- ❖ Leadership Direction Needed to access 2024-25 funds
- ❖ Potential Pathways to Transfer & Consideration



A Co-developed Framework Guides Federal Policy, Programming and Investments in IELCC

- **Co-developed with Indigenous partners** and endorsed by the Assembly of First Nations (AFN), Inuit Tapiriit Kanatami (ITK), and the Métis National Council (MNC).
- Is a **guide for all actors in the ELCC sphere** and complements the *Multilateral ELCC Framework* and
- Identifies principles which guide federal and joint action in this area.
- Includes additional **distinctions-based Frameworks** to address unique priorities of First Nations, Inuit and Métis children and families.
- Implemented through the Indigenous ELCC Transformation Initiative



THREE GUIDING OBJECTIVES

- 1) Enable greater control and influence by Indigenous peoples
- 2) Strengthen Indigenous ELCC (language, culture, quality, access)
- 3) Improve federal horizontal coordination as a first-step to transferring control



IELCC Transformation Initiative

- The co-developed [Indigenous ELCC Framework](#) supports high quality, culturally-based ELCC for Indigenous children and their families with the **ultimate goal of transferring control over Indigenous ELCC to Indigenous governments and/or authorities.**
- Indigenous ELCC funding is permanent and ongoing (no expiry date).
- Indigenous leaders and organizations can engage in long-term, strategic planning to address their communities' early learning and childcare needs.
- Dedicated investments for ELCC governance and capacity building provided to support.





Situating IELCC

The **IELCC Transformation Initiative** is an umbrella over three existing federal programs and new IELCC investments.

FNICCI First Nations and Inuit
Child Care Initiative
(\$54.9M)

- Administered by Employment and Social Development Canada (ESDC) via ISET agreements.

AHSUNC Aboriginal Head Start in
Urban
and Northern
Communities (\$29.1M)

- Administered by the Public Health Agency of Canada (PHAC)

AHSOR Aboriginal Head Start
On Reserve (\$49M)

- Administered by Indigenous Services Canada (ISC)

All IELCC funds could be delivered under a single contribution agreement with Canada at the direction of Leadership.





January
2019

- In 2018/19 funds, in the absence of a defined partnership table, decisions taken by existing Health table to allocate the funding envelope.

June
2019





Snapshot: Alberta IELCC Funds

	Fiscal Years		National Leadership Direction		Regional Leadership Direction		Purpose
	2023-24	2024-25	2023-24	2024-25	2023-24	2024-25	
Programs & Services	\$44,886,499	\$52,202,742	√	√	√	Pending	Supports First Nations priorities for high-quality ELCC programing.
Governance	\$3,440,064	\$3,440,064	√	√	√	Pending	Supports First Nations governance systems, self-determination, links to Canada-wide ELCC system.
Major Capital	\$748,514	\$13,909,579	√	√	√	Pending	Supports planning, building and maintaining new centres in communities.
Transformative Action Fund	\$779, 000	\$779,000	√	√	√	Pending	Enable First Nations-led strategic investments on emerging priorities.

The above funds are in addition legacy funds for FNICCI, ASHOR and AHSUNC.
 There are also funds available nationally for 1) Quality Improvement Projects (QIP) and Repair and 2) Repair and Renovations.

IELCC Terms and Conditions: [Indigenous Early Learning and Child Care \(ELCC\) Transformation Initiative terms and conditions for contributions - Canada.ca](#)



Governance Funding

Purpose:

- Establish or build on the progress of Indigenous national / regional partnership tables and support co-development.
- Strengthening or establishing administrative, technical, and political systems at the regional and community level to govern ELCC.
- Build Indigenous ELCC governance systems and authorities for transfer of IELCC programs and governance to Indigenous control.
- Support Indigenous participation in Canada-wide ELCC system development alongside federal, provincial, and territorial governments.

Examples:

Engagement
with
communities,
leadership,
and federal,
provincial, and
territorial
governments

Dedicated
resources for
IELCC
coordination
and convening
partnership
tables

Research
(Needs
Analysis, Asset
Mapping,
Population,
etc.)

Building
partnerships
with
educational
institutions and
licensing
authorities

Establishing or
formalizing an
Indigenous
ELCC
governance
authority and
structure





Governance Considerations

What could a First Nations-controlled IELCC system look like in Alberta?

- What regional, Treaty, and Nation level political & administrative structures are needed to lead transformation and implement IELCC?
- What body will inform/determine regional funding allocation method?
- Will the same body allocate / oversee capital funds?
- What body will Canada collaborate with on IELCC?
- What platform could support tripartite Federal – Provincial – First Nations collaboration?



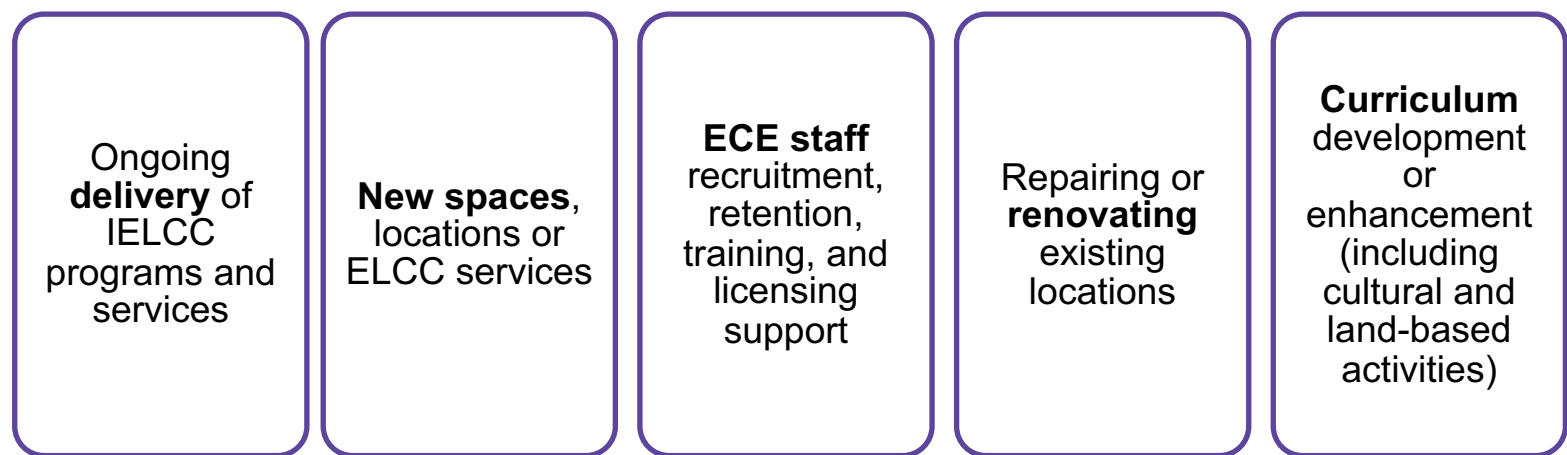


Programs & Services Funds

Purpose:

To support First Nations priorities for high-quality ELCC programing wherever families live, and sector transformation e.g. quality; expanded access; workforce training and remuneration; integration of services.

Examples:





IELCC Infrastructure Funds

IELCC Major Capital: to support building new sites and/or replacement of existing sites

- In 2023-24, Alberta received \$748,514 to support planning.
- To advance funding from 2024-25:
 - Need Alberta First Nations direction on regional allocation approach;
 - Submit a plan with projects prioritization; risk management; identify funds for ongoing program, operating and maintenance costs.

IELCC Repair & Renovations Funds: to support urgent repairs and renovations to existing sites.

- From 2022-2025, guided by common criteria, funding accessed through:
 - ISC for AHSOR sites, PHAC for AHSUNC sites, ESDC/Service Canada for FNICCI sites
- Starting in 2025-2026, funds to be managed and delivered annually through First Nations distinctions-based funding envelopes and AHSUNC.





Transformative Action Fund

Purpose:

- The fund enables Indigenous-led strategic investments on emerging priorities, including supporting the transfer to regional ELCC authorities/ governance bodies and to support Indigenous priorities in the establishment of a Canada-wide ELCC system.

Examples:

Evolution of **governance development** beyond initial layout/scope

Strategic **investments** on evolving priorities

Supporting FPTI tripartite agreements /multilateral **engagements**

Supplementing Capital **projects**





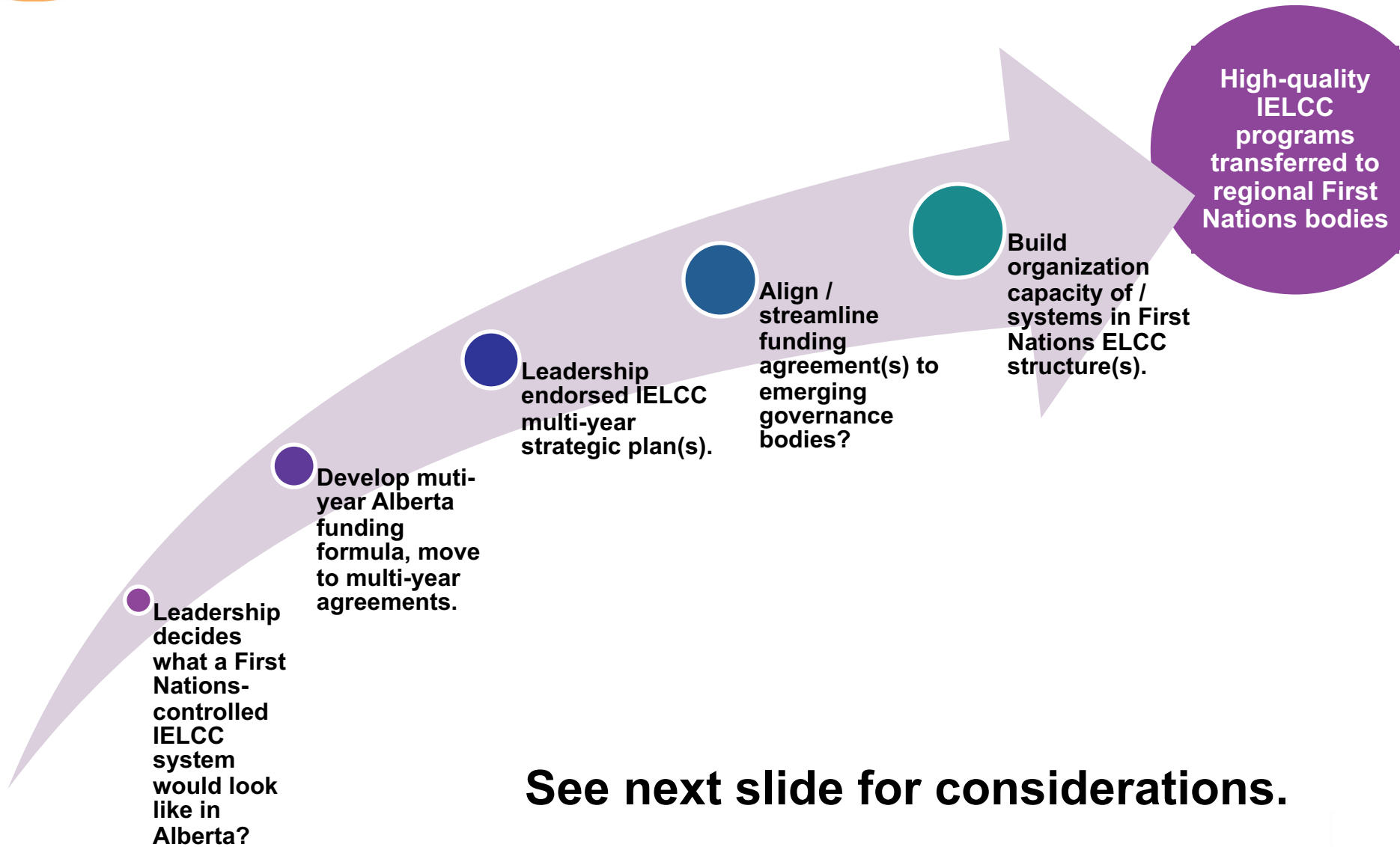
Leadership direction needed to advance 2024-25 funding

- ✓ Regional funding allocation method and endorsed strategic plans for:
 - programs/services,
 - governance,
 - transformative action fund, and
 - capital
- ✓ Direction on agreement streamlining / choice of agreements for 2025-26 onwards.





Possible Pathway to Transfer



See next slide for considerations.



Pathway Considerations

Shaping First Nations-controlled IELCC system

- What regional, Treaty, and Nation level political & administrative structures are needed to lead and implement IELCC transformation?
- Will the same body allocate / oversee capital funds?
- What bod(ies) will inform / determine funding allocation method?
- What bod(ies) will collaborate with Canada on IELCC?
- What platform could support tripartite Federal – Provincial – First Nations collaboration?

Develop multi-year Alberta funding formula, move to multi-year agreements

- Develop annual/multi-year Alberta funding allocation method for a) capital, b) programs/services, c) governance, & d) Transformative Action Fund.
- Should resources be directed to develop long term funding formula to enable multi-year agreement(s)?

Leadership endorsed IELCC multi-year strategic plan(s)

- Develop multi-year regional or Treaty level strategic plans to describe “what will we focus on?” and allow flexibility for communities to answer for themselves the question of “how will we do it?”

Align / streamline funding agreement(s) to emerging governance bodies?

- Is there interest in merging separate childcare funding into a single existing IELCC agreement at regional, Treaty or Nation level.

Build organization capacity of / systems in First Nations ELCC structure(s).

- Put in place Leadership mandate for First Nation ELCC structure/organizations.
- Build/enhance financial, technical, management capacity to implement/oversee IELCC.



Questions?

For more information:

Cheri Reddin, Director General, IELCC Secretariat, ESDC

cheri.reddin@hrsdc-rhdcc.gc.ca

Michelle McCombs, Manager, IELCC Secretariat, ESDC

Michelle.McCombs@hrsdc-rhdcc.gc.ca

Brian Nahwegezhic, Advisor, IELCC Secretariat, ESDC

Brian.Nahwegezhic@hrsdc-rhdcc.gc.ca

IELCC Framework Document Link:

https://www.canada.ca/content/dam/canada/employment-social-development/programs/indigenous-early-learning/1352-IELCC_Report-EN.pdf

